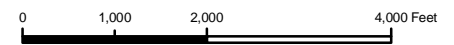
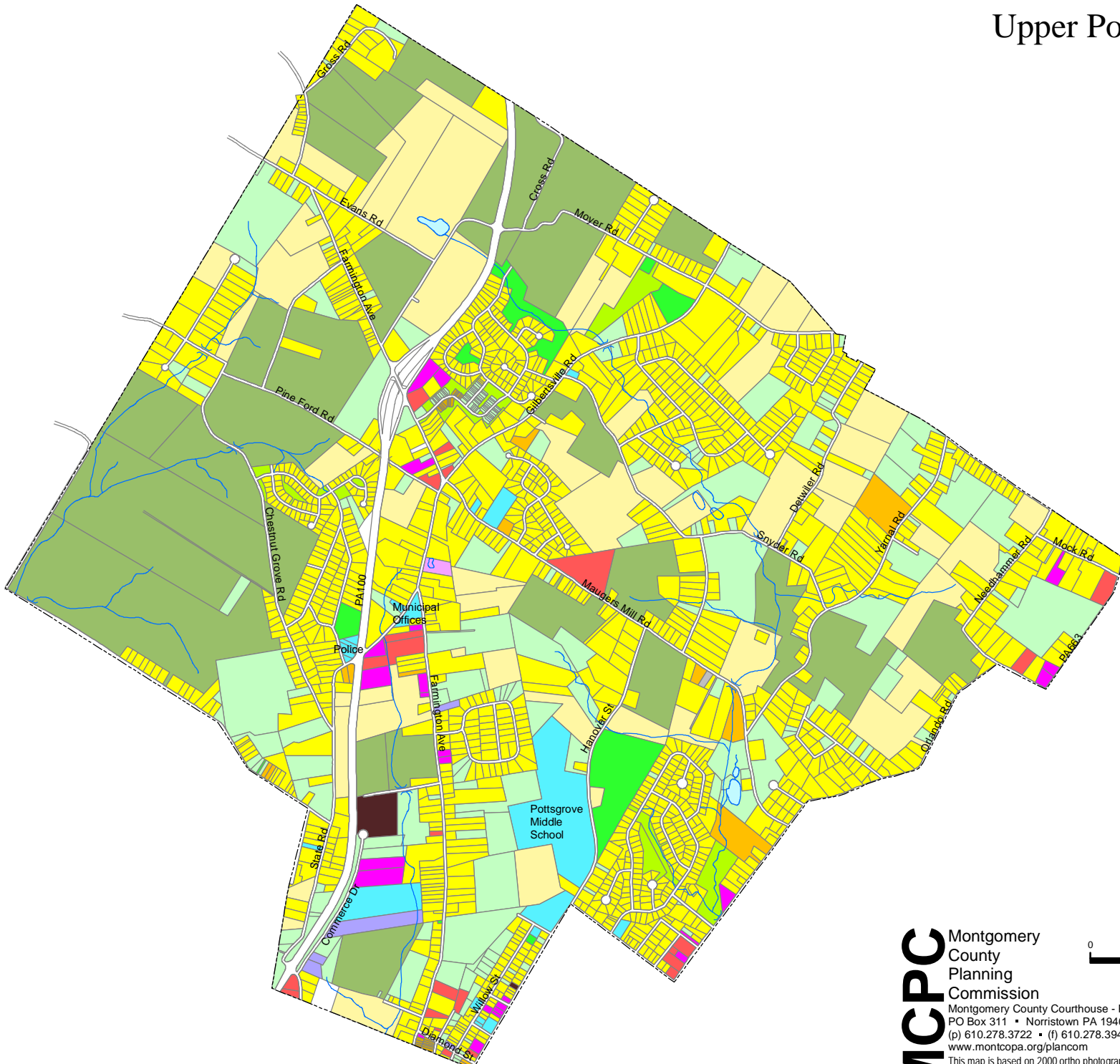


Upper Pottsgrove Township

Existing Land Use

- Multifamily
- Single Family Attached
- Twin / Duplex
- Single Family Detached
- Country Residence
- Mixed Use
- Retail
- Office
- Industrial
- Institutional
- Utilities
- Undeveloped
- Public Open Space
- Private Open Space
- Agriculture
- Water



Base map prepared April 2005

MCPC Montgomery
County
Planning
Commission

Montgomery County Courthouse - Planning Commission
PO Box 311 • Norristown PA 19404-0311
(p) 610.278.3722 • (f) 610.278.3941
www.montcopa.org/plancom

This map is based on 2000 ortho photography and official sources. Property lines were compiled from individual block maps from the Montgomery County Board of Assessment Appeals, with no verification from the deed. This map is not meant to be used as a legal definition of properties or for engineering purposes.